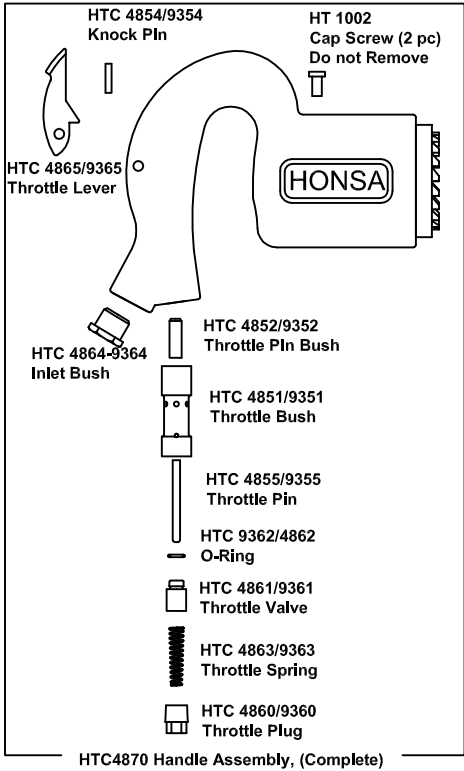
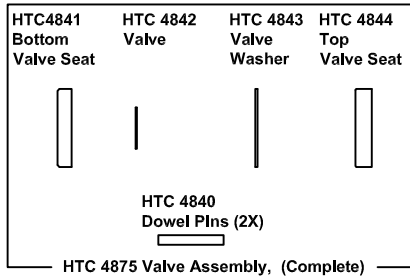


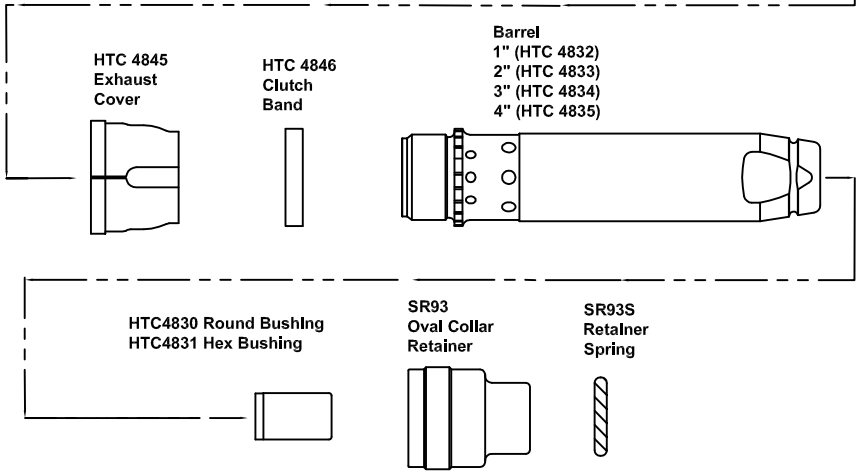
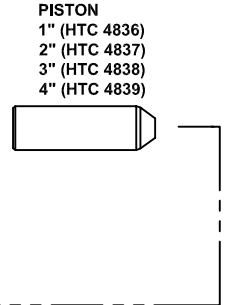
HTC 41-1,2,3,4 REDUCED VIBRATION CHIPPING HAMMER



HTC4870 Handle Assembly, (Complete)



HTC 4875 Valve Assembly, (Complete)



Made in the U.S.A.

1300 11th Street West | Milan, IL 61254
PHONE 309-756-0200 | FAX 309-756-0700 | TOLL FREE 800-800-9371
www.honsatools.com

HONSA ERGONOMIC TECHNOLOGIES, INC

RETRO-FIT/MAINTENANCE PROCEDURES FOR HONSA TOOLS CHIPPING HAMMERS AND RETRO-FIT HANDLES

RETRO-FIT HANDLE 4870

CHIPPING HAMMERS HTC 41-1", 2", 3", 4"

1. REMOVE ORIGINAL HANDLE/BACKHEAD, IF INSTALLING A RETRO-FIT HANDLE. OTHERWISE PROCEED TO STEP 2 TO REMOVE BARREL FROM HONSA CHIPPING HAMMER FOR MAINTENANCE.
2. BEFORE INSTALLATION OR REMOVAL OF ANY BARREL, THE 5/16" - 18 X 1/2" SOCKET HEAD CAP SCREWS MUST BE IN BOTH 5/16 HOLES LOCATED AT THE TOP AND BOTTOM OF THE HANDLE HOUSING. **THESE SCREWS ARE INSTALLED BY THE MANUFACTURER AND SHOULD REMAIN PERMANENTLY IN PLACE. IF MISSING DO NOT PROCEED AS PERMANENT DAMAGE MAY RESULT TO THE URETHANE DURING TIGHTENING OR LOOSENING. FAILURE TO USE PROPER PARTS VOIDS WARRANTY.**
3. HAND TIGHTEN BARREL INTO HONSA HANDLE, OIL AND RUN TOOL TO ENSURE PROPER VALVE OPERATION.
4. PLACE HANDLE FLATS AGAINST VISE JAWS AND TIGHTEN WITH BARREL POINTING UP. PLACE 30" (MINIMUM) WRENCH ON BARREL TAPER/FLATS AND TIGHTEN TO 140 FT/LBS. DO NOT OVERTIGHTEN. (DURING MAINTENANCE SHOULD AN OVER TIGHTENED BARREL NOT LOOSEN AFTER NORMAL EFFORTS, PLACE ENTIRE TOOL IN FREEZER OVERNIGHT AND ATTEMPT TO LOOSEN WHILE FROZEN. DO NOT USE A TORCH TO LOOSEN BARREL. SHOULD BARREL NOT BREAK FREE AFTER FROZEN CONTACT HONSA TOOLS FOR FURTHER INFORMATION.)
5. POSITION CLUTCH BAND OR LOCK RING (WRENCH BARREL TO PRECISE POSITION IF NEEDED), INSTALL EXHAUST DEFLECTOR WITH DIMPLES ALIGNED AND GAP FACING DOWN. REMOVE FROM VISE.
6. AFTER 24 HOURS OF OPERATION RE-TIGHTEN BARREL.

USE OF OTHER THAN HONSA REPLACEMENT PARTS MAY DECREASE PERFORMANCE, INCREASE MAINTENANCES, AND MAY VOID WARRANTY.

*** LUBRICATE DAILY ***