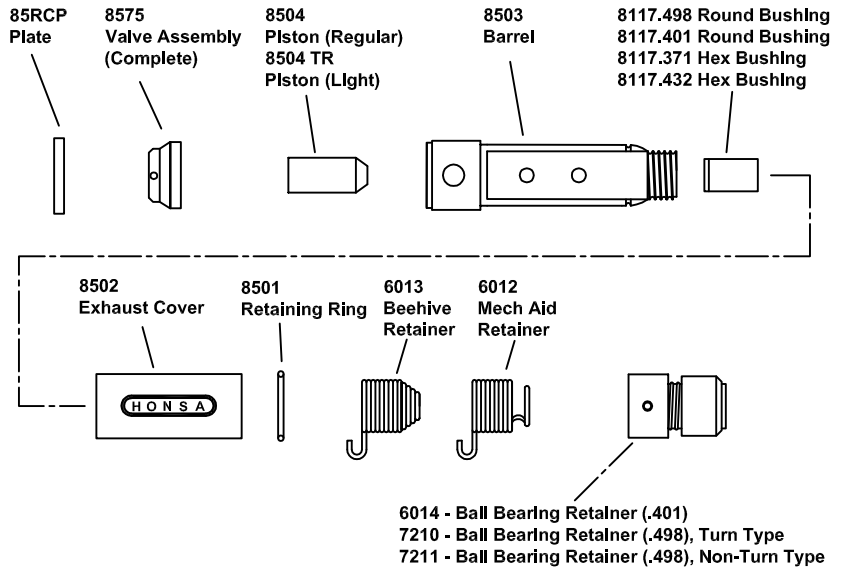
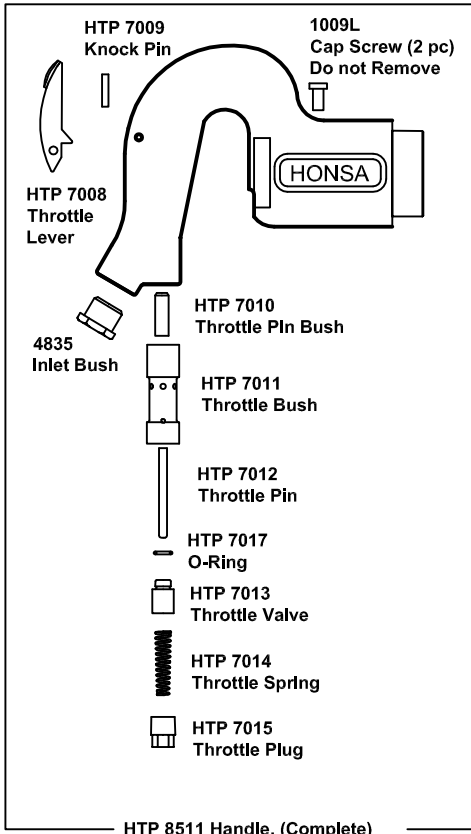




HTP 85 RIVETER / AIR HAMMER



*** LUBRICATE DAILY ***

1. Disconnect air supply from tool. Remove chisel from nose end of tool.
2. Before installation or removal of any barrel, the socket head cap screws must be in both 5/16" holes in the handle housing. **These screws are installed by the manufacturer and should permanently remain in place. If missing, DO NOT PROCEED as permanent damage may result to the urethane during the tightening or loosening. FAILURE TO USE PROPER PARTS VOIDS WARRANTY.**
3. Place barrel flats in vise jaws and loosen by turning handle counterclockwise until handle can be removed from barrel assembly. Remove retaining ring and exhaust shield. Inspect piston, valve parts, barrel, nose bushing, exhaust and retaining ring for wear or damage. Replace any worn parts. Inspect handle parts for wear or damage, and replace as needed.

USE OF OTHER THAN HONSA REPLACEMENT PARTS MAY DECREASE PERFORMANCE, INCREASE MAINTENANCE AND MAY VOID WARRANTY.

1. Before installation or removal of any barrel, the socket head cap screws must be in both holes in the handle housing. **These screws are installed by the manufacturer and should permanently remain in place. If missing, DO NOT PROCEED as permanent damage may result to the urethane during the tightening or loosening. FAILURE TO USE PROPER PARTS VOIDS WARRANTY.**
2. Place barrel flats in vise jaws, insert piston in barrel, place valving on barrel, and screw onto handle clockwise. Install exhaust shield and retaining ring. Resistance should be felt while screwing on the handle. Make sure the assembly is completely tight.
3. Install a blank chisel and retainer. Test tool by placing blank chisel against an approved surface, and run tool to test for proper operation.

TO DISASSEMBLE TOOL

TO ASSEMBLE TOOL

MAINTENANCE PROCEDURES FOR HTP-85 AIR HAMMERS



HONSA ERGONOMIC TECHNOLOGIES, INC

Made in the U.S.A.

1300 11th Street West | Milan, IL 61264
PHONE 309-756-0200 | FAX 309-756-0700 | TOLL FREE 800-800-9371
www.honsatools.com