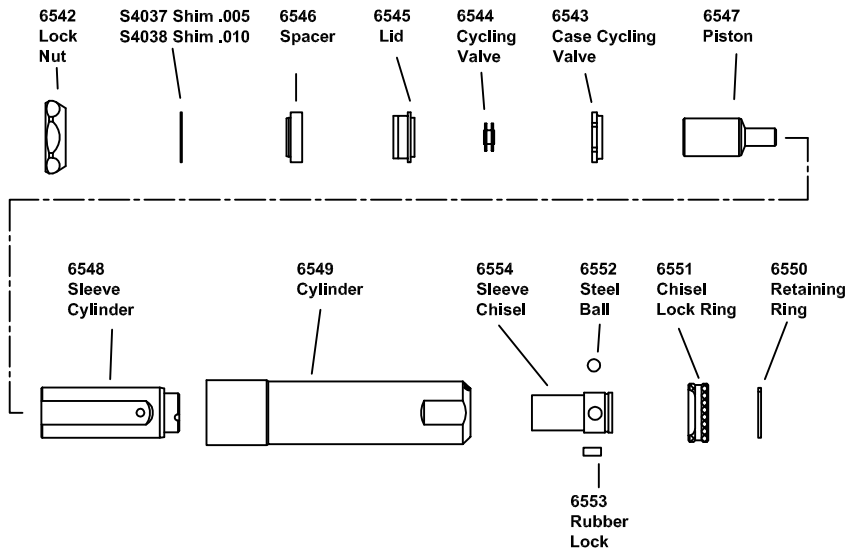
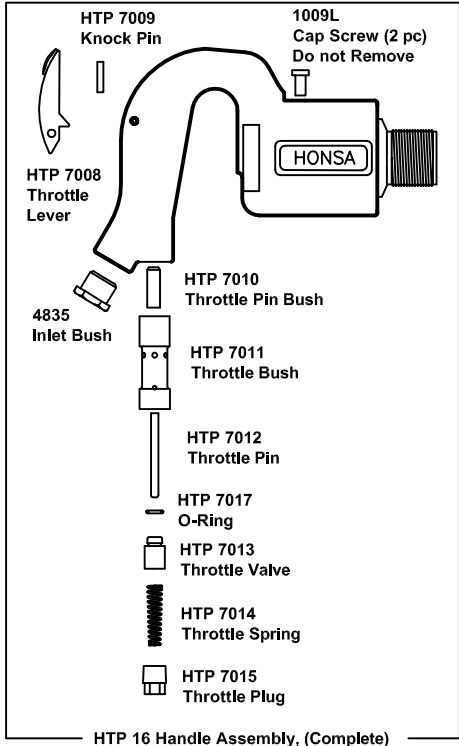


HTP 456 Scalers



*** LUBRICATE DAILY ***



HONSA ERGONOMIC TECHNOLOGIES, INC

Made in the U.S.A.
 1300 11th Street West | Milan, IL 61264
 PHONE 309-756-0200 | FAX 309-756-0700 | TOLL FREE 800-800-9371
 www.honsatools.com

MAINTENANCE PROCEDURES FOR HONSA TOOLS HTP-456 SCALERS

TO ASSEMBLE TOOL

1. Before installation or removal of any barrel, the socket head cap screws must be in both holes in the handle housing. **These screws are installed by the manufacturer and should permanently remain in place. If missing, DO NOT PROCEED as permanent damage may result to the user/frame during the tightening or loosening. FAILURE TO USE PROPER PARTS VOIDS WARRANTY.**
2. Install scaler lock nut onto handle adapter by threading the nut all the way on.
3. Screw scaler barrel onto handle adapter and hand tighten. Oil and run tool to ensure proper operation.
4. Place scaler barrel into vise at flats and tighten handle to 120 foot pounds. Shimms may be needed to align the chisel cutting edge properly.
5. Use a wrench to tighten down lock nut to 100 foot pounds.
6. After 24 hours of operation, re-tighten barrel.

USE OF OTHER THAN HONSA REPLACEMENT PARTS MAY DECREASE PERFORMANCE, INCREASE MAINTENANCE AND MAY VOID WARRANTY.